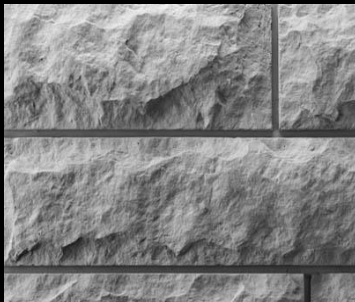




# Low Use (2-5) ABS Plastic Formliners

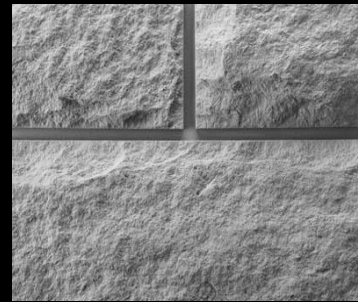
## Stone & Block



**Quarry Stone**  
#889



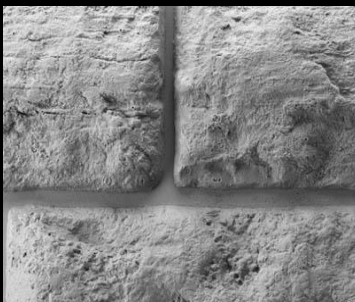
**Quarry Stone**  
#892



**Quarry Stone**  
#894



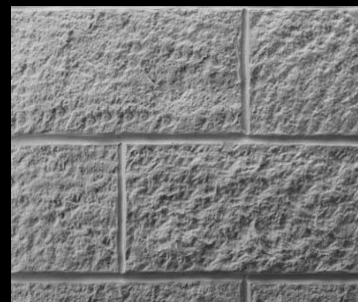
**24\" Quarry Stone**  
#896



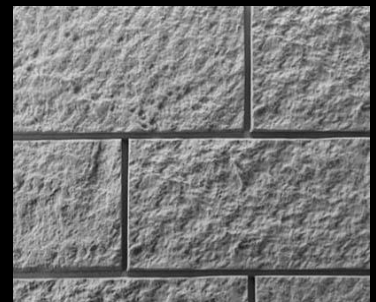
**14 3/4\" Rustic Quarried 1 5/8\"**  
#897A



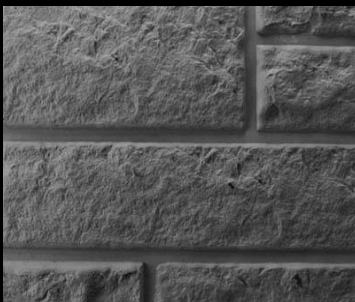
**Rustic Ashlar Stone**  
#898



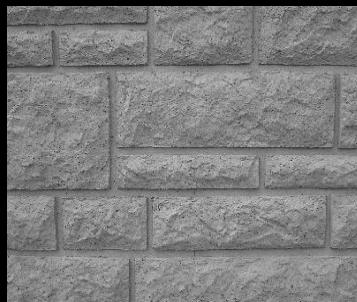
**8 x 16 Split Block Coved**  
#901A



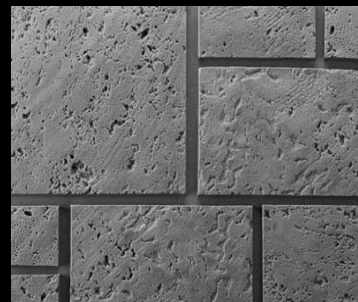
**8 x 16 Split Block Raked**  
#901B



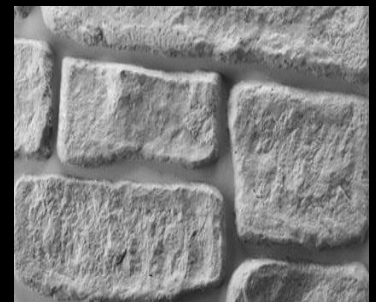
**Ashlar Stone**  
#904A



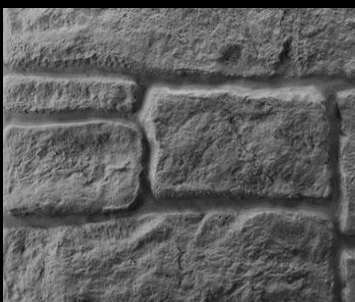
**Small Aged Ashlar Stone**  
#905



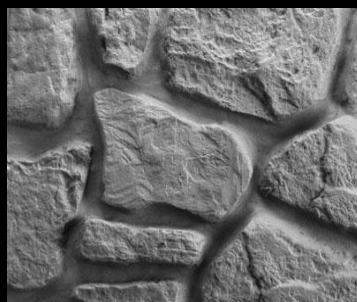
**Coral Ashlar Stone**  
#907



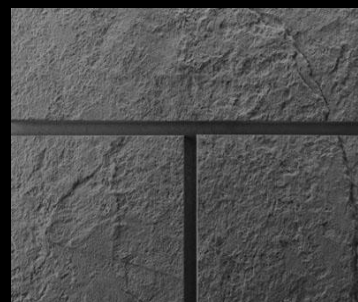
**Median Barrier Drystack**  
#910



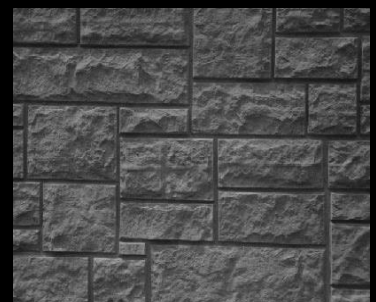
**Large Stone Drystack**  
#911A



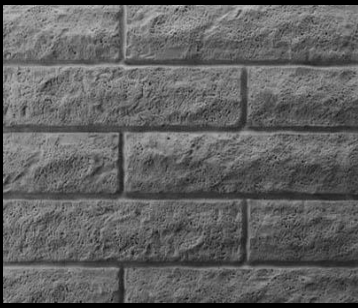
**Valley Forge  
Field Stone 3/4 Relief**  
#912A



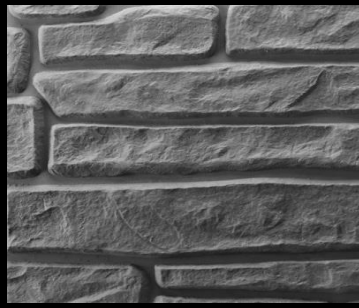
**12 x 24 Split Limestone  
Running Bond**  
#918



**Weathered Cut Ashlar**  
#919



**Slump Stone**  
#928



**Mauch Chunk Drystack**  
#937